

the Wheelagram



Materials Cleaning Systems Division
Wheelabrator-Frye Inc.

VOL. II NO. 8

MARCH 3, 1978

LET'S TALK VACATION . . . Employees (with a limited number of exceptions) eligible for two weeks' vacation must take their vacations during the vacation shutdown — weeks of **July 16** and **July 23**. (A skeleton crew will work during this period.)

Employees' supervisors may allow vacations at other than the shutdown period if production requirements permit; however, these employees may or may not be required to work during the shutdown period and will be notified as soon as possible by their supervisors. If they do not work during shutdown, it will be without pay.

Employees who are not eligible for a full two weeks' vacation will be provided work during the shutdown.

The foremen will canvass the departments to definitely establish the vacation working schedule.

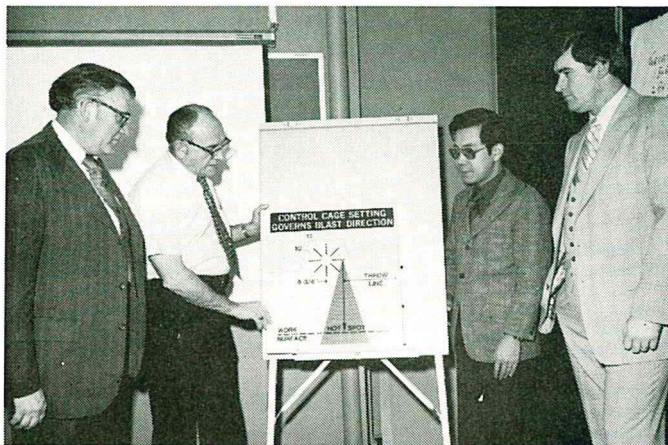
All vacation schedules must be completed and returned to the Personnel Office by **March 10**.

DOWN MEXICO WAY . . .



At the Petroleum Show recently held in Mexico City, **Bob Riordan**, General Manager of Wheelabrator de Mexico, S. A., demonstrates the capability of the 1-8D Blastrac for **Jorge Diaz Serrano**, General Manager of PEMEX; the Honorable **Patrick Lucey**, U.S. Ambassador to Mexico; and **Ivan A. Cosini**, Director of the U.S. Trade Center in Mexico.

SCHALLIOL'S WAY . . .



Bob Schalliol, Manager-Marketing Communications, conducts a Wheelabrator product and application indoctrination session for (l. to r.) **John Stewart**, a new member to our financial staff; **Takemi Kato**, Controller, Wheelabrator Sinto do Brazil and **Bill Hammond**, Wheelabrator Financial Corp. Takemi has come to Mishawaka for a two-week period to familiarize himself with our various operations, accounting and costs procedures.

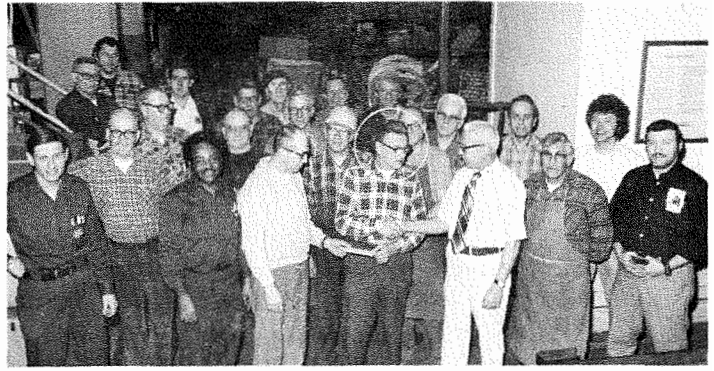
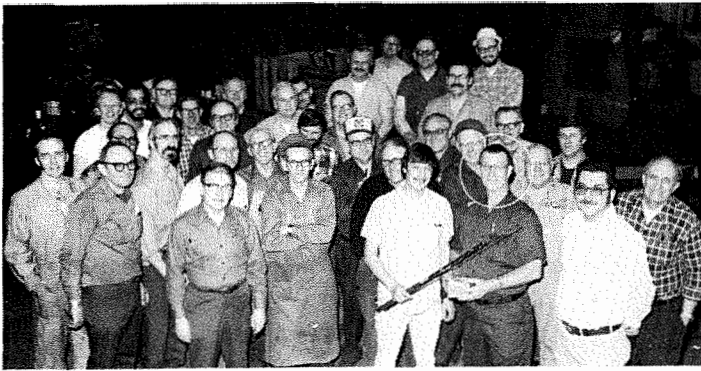
WHY heat a kettle of water when all you need is a cup?

NEW FACES . . . Welcome aboard to **BRUCE THURSTON** who has joined Plant 2's staff as second shift Melt Foreman. During the next two weeks he will be working the second and third shifts to familiarize himself with our procedures and people. Bruce comes to us from Clark Equipment Company where, in the past thirteen years, he has worked in all operations at the steel foundry in a supervisory capacity and general foreman.

THE AVERAGE EXECUTIVE spends nearly 700 hours a year in meetings. One large corporation reduced this figure by one-third with a simple memo: Any meeting exceeding one hour must be reported in writing to the company's general manager.

PROMOTIONS . . . Congratulations to **YVONNE SHARP** promoted from Intermediate Accounting Clerk to Senior Accounting Clerk-General Accounting; **LEO T. PAHARIK**, from General Foreman to Assistant Superintendent-Plant 2; and **DONALD W. NEFF**, Customer Order Service Clerk-Plant 2 to Scheduling Supervisor-Plant 1.

THANKS AND BEST WISHES TO OUR RETIREES . . .



RAY E. LIDGARD (top left), Assembler "A"-Assembly, was honored by co-workers last Friday. Ray has 23 years of company service. Tuesday marked three farewells when **LEO B. BOURRET** (top right), General Order Filler and Checker-Stockroom; **JOHN B. KIJEK** (bottom left), Supervisor-Production Control; and **EARL D. NIFONG** (bottom right), Arc Welder-Steel Shop, were feted by co-workers. John retires with over 25 years of company service, Leo with 16 and Earl with 18 years. Good luck to all!

We can all profit from Junior Achievement's example

They don't knock the system before they've tried it.

Today, with so much criticism being leveled at our way of doing business, it's encouraging to see the young men and women of Junior Achievement set up their own business with their own product to make and sell. Here's where they find out it really works. It's here they come to appreciate the finest system in the world. Then if they have criticism to offer, it will be constructive and we will all benefit from it.



TIME FLIES, but it's up to you to be the navigator.

ONE WAY to speed up the postal service might be to pay postal employees by mail.

JULIANNA JABBER . . . "Jes-n-Ole Fashion Card Party" is the theme of the annual fund raiser sponsored by the Julianna Club to be held April 27 at the Queen of Peace Social Hall. REMEMBER — All proceeds go to the Julianna Club Scholarship Fund so plan to make up a table, or two, or three! Co-chairing the event are Florence Duncan and Marcia Batten.

April 29 has been set for the **Spring Shopping Spree** to Woodfield Mall-Chicago. Joan Schue and Kathy Byrd, co-chairmen, will keep us posted on further details.

HERE AND THERE . . . Alan Van Huffel, Product Manager-Portable Systems, was the guest speaker at the February meeting of the American Institute of Plant Engineers-Michiana Chapter. Subject: "Blastrac Applications for the Plant Engineer." (Interesting aside: Our Max Johnson, Manager-Facilities Engineering, is the Vice President and Program Chairman of the group.)

Addressing the South Bend Chapter of the Society of Manufacturing Engineers at their February meeting were Fred Baldauf, Industry Manager-Transportation, and Carter Dreves, Manager of Public Relations, Subject: "Principles and Applications of Blast Cleaning."

Published weekly by and for employees of Materials Cleaning Systems Division.

Wheelabrator-Frye Inc.
400 South Byrkit Avenue
Mishawaka, Indiana 46544

Del Tenney, Editor Ext. 397